

COMFORT PM

GRUNDFOS 

HIGH EFFICIENCY, DOMESTIC HOT WATER CIRCULATOR

WATER SOURCE



Hot Water

APPLICATION



Hot Water
Circulation

Approved for
Drinking Water
AS/NZS 4020 

2
YEAR
WARRANTY



SCAN THE QR CODE
TO LINK TO GRUNDFOS
PRODUCT CENTER

The Grundfos COMFORT PM is an ultra quiet, ultra energy efficient, domestic hot water circulation pump designed to circulate hot water around the home, making it instantly available for taps in the bathroom, kitchen and anywhere hot water is required.

- **Instant hot water at the tap** - As circulators provide instant hot water at the tap (with return line), they can save hundreds of litres per year from going down the drain while you wait for hot water to arrive from your hot water system
- **Energy efficient** - The AUTOADAPT feature “learns” the hot water consumption pattern of the home and then varies pump use accordingly in the future, providing high levels of energy efficiency compared to other circulators that run continuously
- **Low running costs** - Comes with a highly efficient permanent magnet motor that helps to save power and lower running costs
- **Ultra quiet operation** - Very quiet operation that won't disturb your family



COMFORT PM

COMFORT PM WITH AUTOADAPT

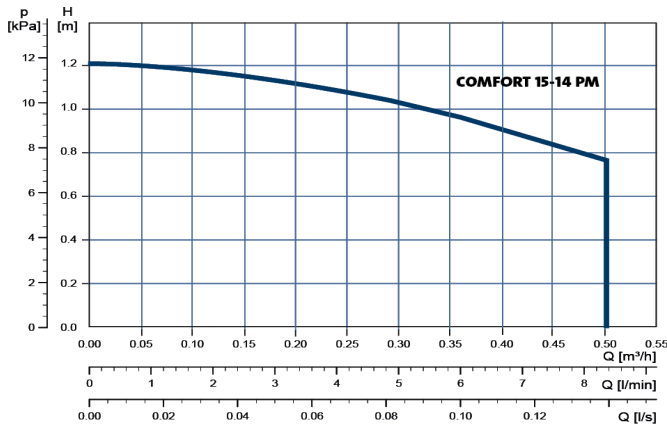
PUMP SIZING

	COMFORT PM 15-14
Sizing assumptions: <ul style="list-style-type: none">• Uninsulated pipework• 20 elbows and 10 tees• 5°C temperature drop• Electric storage hot water system	15 mm Pipework
	Maximum System Pipework Length
	30 m

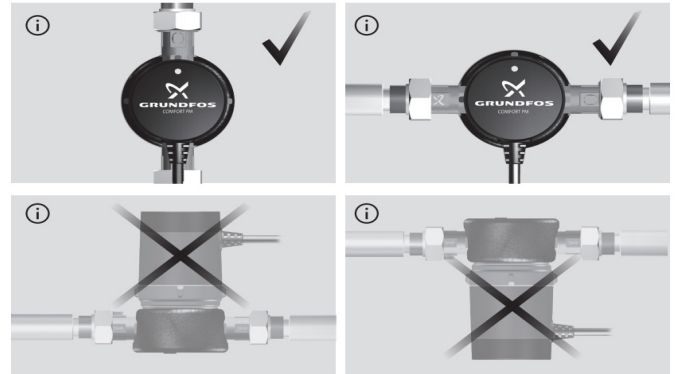
Comfort PM is not suitable for installation with tempering valve

TECHNICAL & PERFORMANCE DATA

PERFORMANCE CURVE



INSTALLATION NOTES



OPERATING CONDITIONS

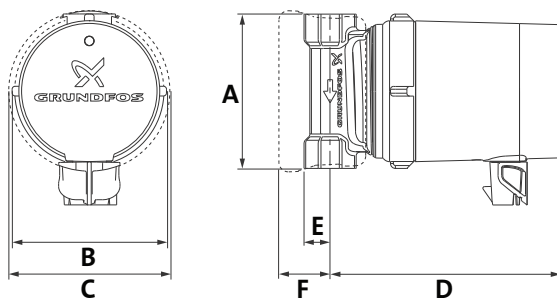
Ambient Temperature	0°C to +40°C
Liquid Temperature	+2°C to +95°C
System Pressure	Max. 10 bar
Sound Pressure	Max. 43 dB

TECHNICAL DATA

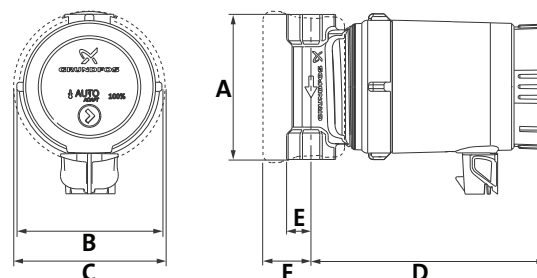
Power Supply Voltage	230 Volt, 50 Hz
Power Connection	Comes with Alpha plug Initial installation by qualified electrician
Enclosure Class	Undercover installation recommended (IP44)

PHYSICAL ATTRIBUTES

COMFORT PM B



COMFORT PM BA (AUTOADAPT)



Model	Motor Power P1 (kW)	Pipe Connections	Dimensions (mm)						Weight (kg)
			A (Port to Port)	B (w1)	C (w2)	D (d1)	E (d2)	F (d3)	
COMFORT 15-14 B PM GB	0.03	½"	80	795	84	119	13.5	25	1
COMFORT 15-14 BA PM GB	0.03	½"	80	795	84	129	13.5	25	1

Visit our Auckland or Rotorua Branch to have a chat about the Comfort PM Pump. Alternatively flick us a call or email, and we will get back to you ASAP.

Hi Flo Auckland Branch
3 Fairfax Avenue, Penrose, Auckland 1642
09 579 6375
Sales@hiflopumps.co.nz

Hi Flo Rotorua Branch
72 Old Taupo Road, Mangakakahi, Rotorua
3015 07 348 7516
Sales@hiflopumps.co.nz