

ALPHA2

MULTI-SPEED, CAST IRON HOT WATER CIRCULATOR

GRUNDFOS 

 **HiFLOPUMPS**
Service . Expertise . Quality

WATER SOURCE



Hot Water

APPLICATION



Heating



SCAN THE QR CODE
TO LINK TO GRUNDFOS
PRODUCT CENTER

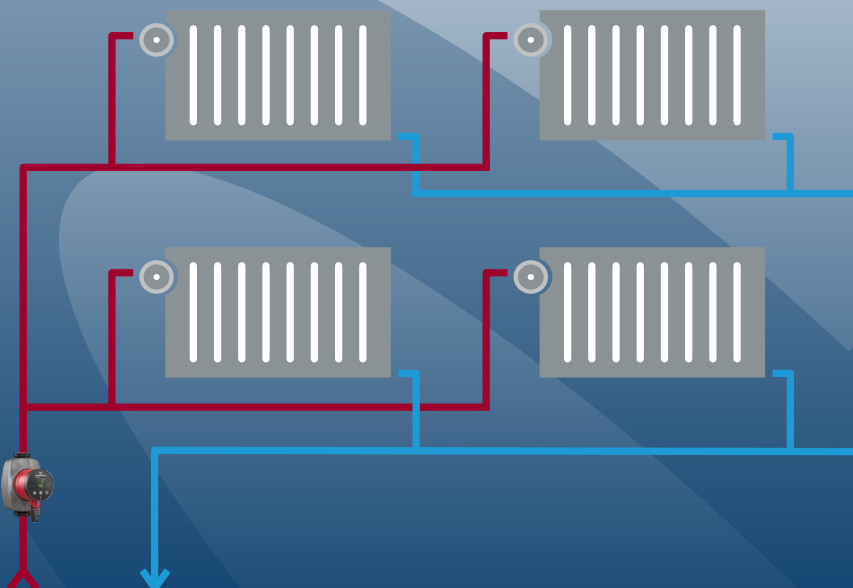
The Grundfos ALPHA2 is an ultra quiet, compact hot water circulation pump designed for operation in a closed loop heating system.

- **Ideal for heating systems** - Perfect for large home, hot water radiator heating systems
- **Energy efficient** - The AUTOADAPT feature “learns” the hot water circulation patterns of the home heating system and then varies pump use accordingly in the future
- **Ultra quiet operation** - Very quiet operation that won't disturb your family

ALPHA2 25 mm Union Set
available separately

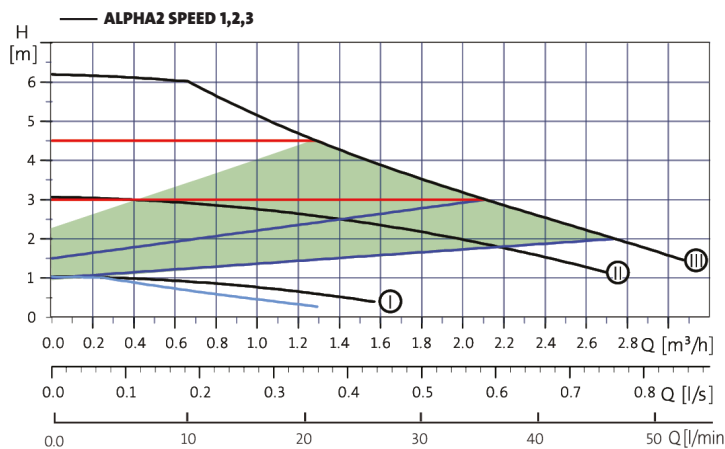


TYPICAL HEATING SYSTEM INSTALLATION

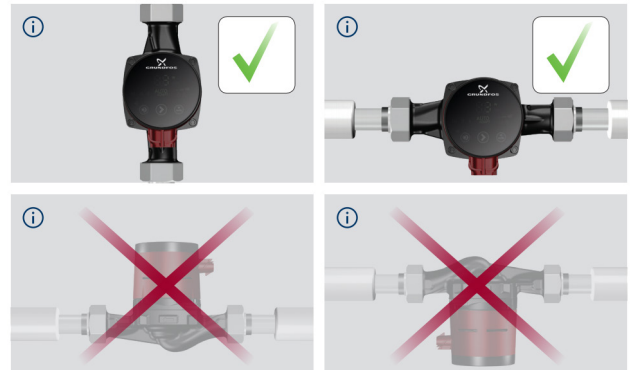


TECHNICAL & PERFORMANCE DATA

PERFORMANCE CURVE



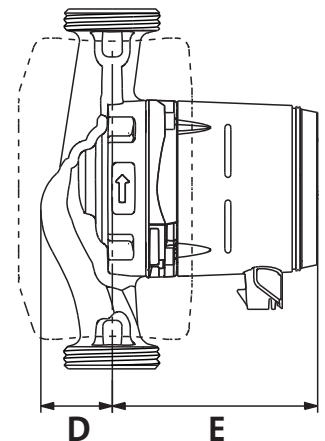
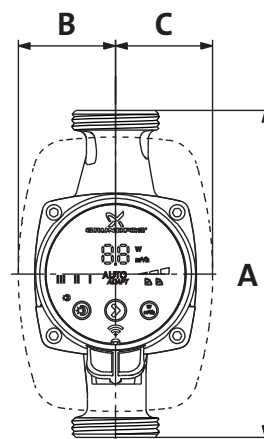
INSTALLATION NOTES



OPERATING CONDITIONS

Ambient Temperature	0°C to +40°C
Liquid Temperature	+2°C to +110°C
System Pressure	Max. 10 bar
Sound Pressure	Max. 43 dB

PHYSICAL ATTRIBUTES



TECHNICAL DATA

Power Supply Voltage	230 Volt, 50/60 Hz
Power Connection	Comes with Alpha plug Initial installation by qualified electrician
Enclosure Class	Undercover installation recommended (IPX4D)

Model	Motor Power P1 (kW)	Pipe Connections	Dimensions (mm)					Weight (kg)
			A (Port to Port)	B (w1)	C (w2)	D (d1)	E (d2)	
ALPHA2 25-60 130	0.03	1 ½"	130	54	54	37	104	2
ALPHA2 25-60 180	0.03	1 ½"	180	54	54	37	104	2

Visit our Auckland or Rotorua Branch to have a chat about the Alpha2. Alternatively flick us a call or email, and we will get back to you ASAP.

Hi Flo Auckland Branch
3 Fairfax Avenue, Penrose, Auckland 1642
09 579 6375
Sales@hiflopumps.co.nz

Hi Flo Rotorua Branch
72 Old Taupo Road, Mangakakahi, Rotorua 3015
07 348 7516
Sales@hiflopumps.co.nz